

- Legend**
- Impacted Building Areas
 - Background Reference Areas
 - Impacted Building Extent
 - Demolished Impacted Buildings
 - Parcel G Boundary

Source: UTM Center, Survey for DigitalData, Georgia, Eastern Geographics, CHESTERVILLE, GA, 03094, UNOS, AUSTRIAN, USA, and the GIS User Community





Figure 4-1
Impacted Buildings and
Background Locations
Parcel G Work Plan
Former Hunters Point Naval Shipyard
San Francisco, California



Legend:

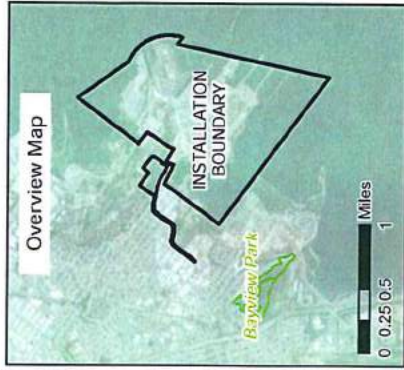
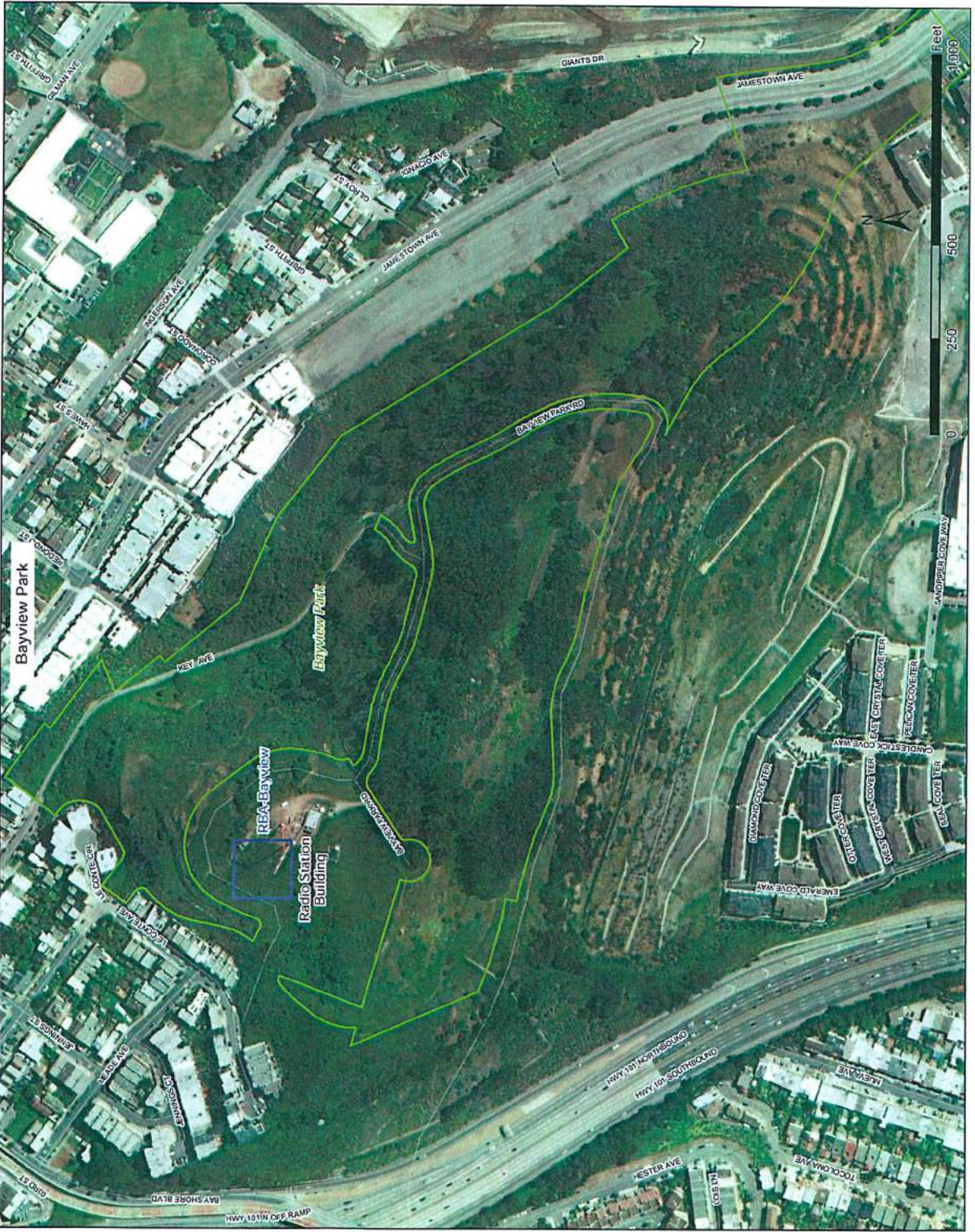
- Reference Background Area
- Installation Boundary
- Parcel Boundary
- Current and Former Building Site





BASE MAP SOURCE: SRTM30 PLUS DEM, SOURCE: Esri, DigitalGlobe, GeoEye, Earthstar, Swiss Topography, USDA, USDA, USDA, AeroGRID, IGN, and the GIS User Community

Figure 3-1
 HPNS Reference Background Areas
 Hunters Point Naval Shipyard
 San Francisco, CA

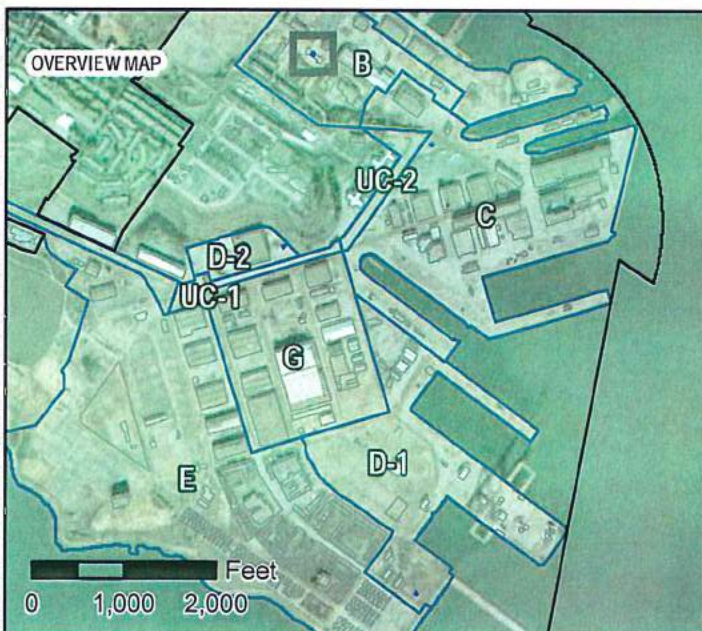


Legend:

- Background Location
- Park
- Building
- Installation Boundary

Map: 10/15/2016
 Source: Esri, DigitalGlobe, GeoEye, Earthstar Geographics, CNR Aero, USDA, USGS, AeroGRID, IGN, and the GIS User Community
 Park Lands Layer developed by the San Francisco Recreation and Parks Department (2016).

Figure 3-2
 Offsite Reference Background Area,
 Bayview Park
 Hunters Point Naval Shipyard
 San Francisco, CA



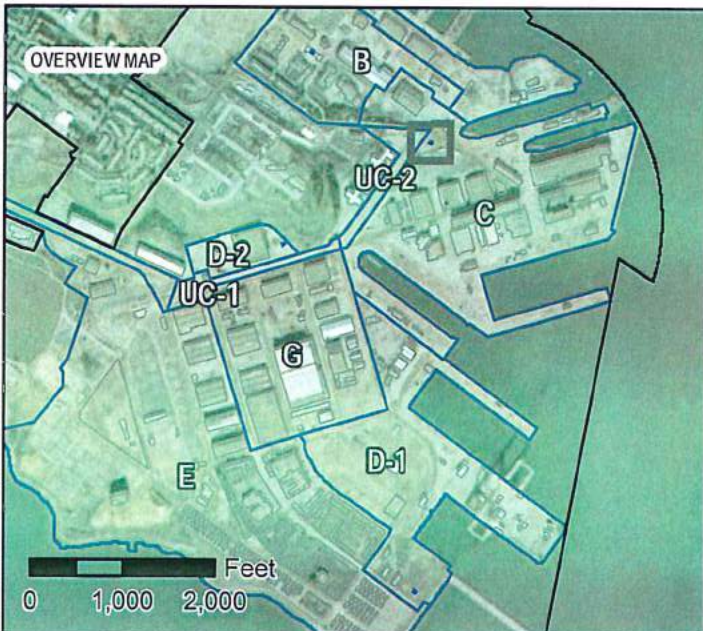
Legend:

- Sample Location
- Reference Background Area
- Installation Boundary
- Parcel Boundary
- Current and Former Building Site

COORDINATE SYSTEM:
NAD 1983 StatePlane California III FIPS 0403 Feet

BASE MAP SOURCE:
Service Layer Credits: Source: Esri, DigitalGlobe, GeoEye, Earthstar Geographics, CNES/Airbus DS, USDA, USGS, AeroGRID, IGN, and the GIS User Community

Figure 3-4
HPNS Reference Background Area RBA-1
Hunters Point Naval Shipyard
San Francisco, CA



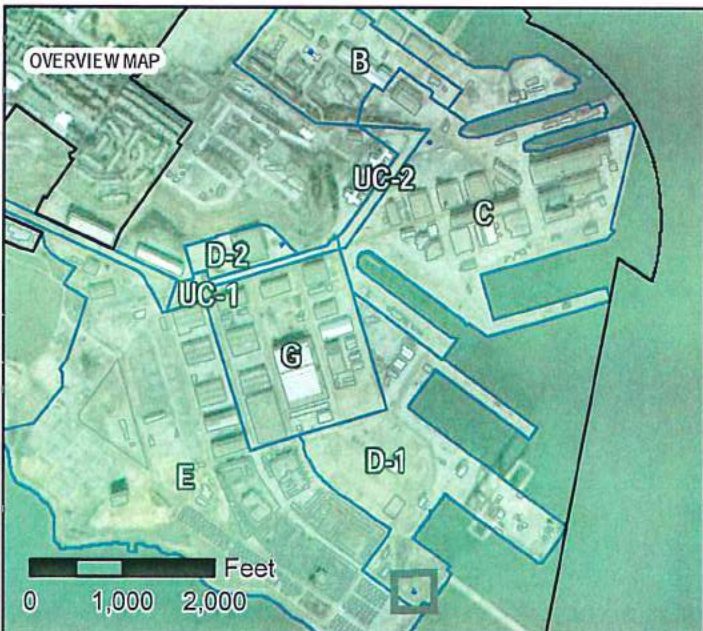
Legend:

- Sample Location
- Reference Background Area
- Installation Boundary
- Parcel Boundary
- Current and Former Building Site

COORDINATE SYSTEM:
NAD 1983 StatePlane California III FIPS 0403 Feet

BASE MAP SOURCE:
Service Layer Credits: Source: Esri, DigitalGlobe, GeoEye, Earthstar Geographics, CNES/Airbus DS, USDA, USGS, AeroGRID, IGN, and the GIS User Community

Figure 3-5
HPNS Reference Background Area RBA-2
Hunters Point Naval Shipyard
San Francisco, CA



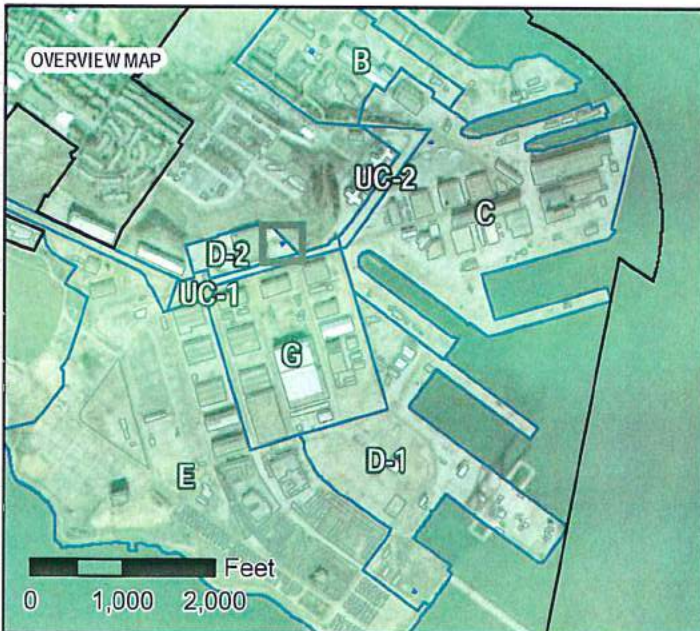
Legend:

- Sample Location
- Reference Background Area
- Installation Boundary
- Parcel Boundary
- Current and Former Building Site

COORDINATE SYSTEM:
 NAD 1983 StatePlane California III FIPS 0403 Feet

BASE MAP SOURCE:
 Service Layer Credits: Source: Esri, DigitalGlobe, GeoEye, Earthstar Geographics, CNES/Airbus DS, USDA, USGS, AeroGRID, IGN, and the GIS User Community

Figure 3-6
 HPNS Reference Background Area RBA-3
 Hunters Point Naval Shipyard
 San Francisco, CA



Legend:

- Sample Location
- Reference Background Area
- Installation Boundary
- Parcel Boundary
- Current and Former Building Site

COORDINATE SYSTEM:
 NAD 1983 StatePlane California III FIPS 0403 Feet

BASE MAP SOURCE:
 Service Layer Credits: Source: Esri, DigitalGlobe, GeoEye, Earthstar Geographics, CNES/Airbus DS, USDA, USGS, AeroGRID, IGN, and the GIS User Community

Figure 3-7
 HPNS Reference Background Area RBA-4
 Hunters Point Naval Shipyard
 San Francisco, CA